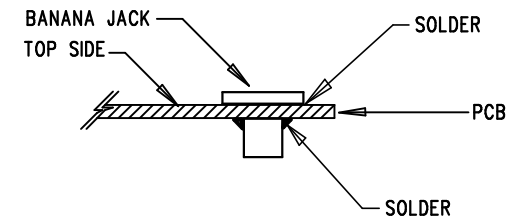


REVISION HISTORY				
ECO	REV	DESCRIPTION	APPR	DATE
—	1	PRODUCTION	R.SMITH	05-21-13

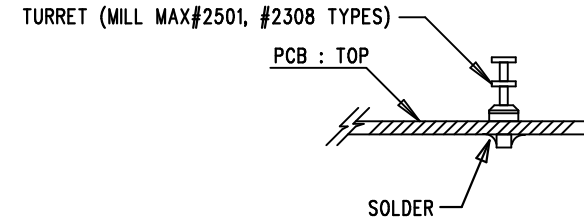
## NOTES: UNLESS OTHERWISE SPECIFIED

1. WORKMANSHIP SHALL BE IN ACCORDANCE WITH IPC-A-610.
2. ASSEMBLY PROCESS SHALL INCLUDE REFLOW SOLDER TOP SIDE SMD. MAXIMUM SOLDER TEMPERATURE SHALL BE 240 DEGREES CELSIUS.
3. OMITTED (OPTIONAL) PARTS ARE SPECIFIED ON THE BILL OF MATERIALS. LAND PATTERNS FOR THESE PARTS SHALL BE FREE OF SOLDER. MASK THE SOLDER STENCIL AT THESE LOCATIONS.
4. DEPANELIZE BOARDS AFTER ASSEMBLY AND ROUTE-OUT THE BREAKOUT TABS ON ALL BOARD EDGES.
5. DO NOT PUT ASSEMBLY OR QA STAMPS ON BOARD.
6. INSTALL SHUNTS AT JP1, JP2 POSITIONS AS SHOWN.
7. MARK EACH ASSEMBLY TYPE WITH BLACK PERMANENT MARKER.

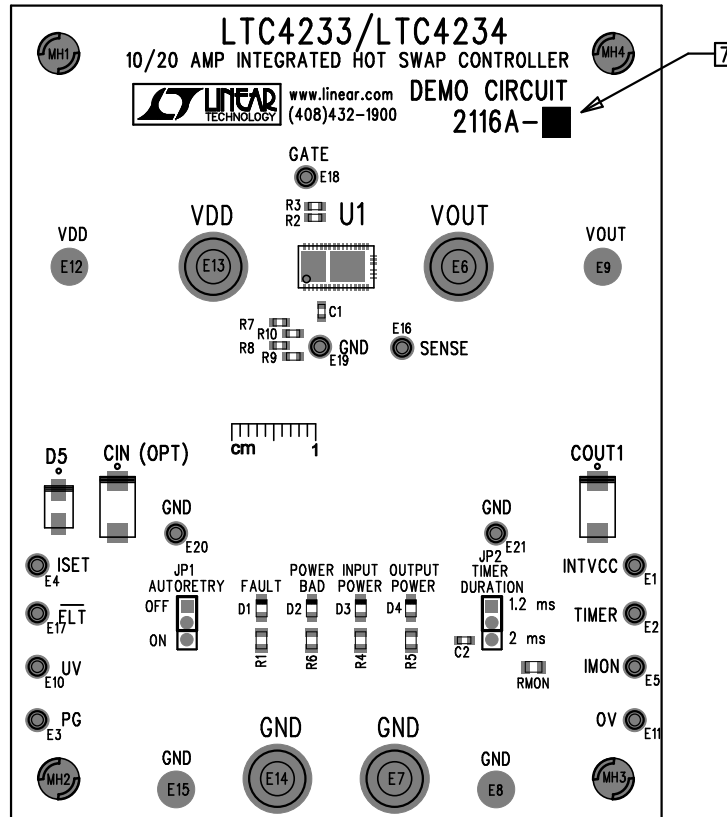
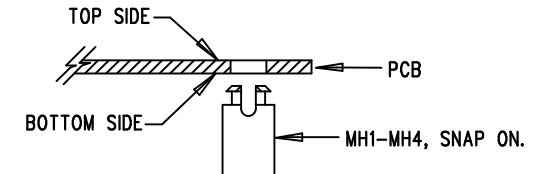
8. INSTALL BANANA JACKS E6, E7, E13 AND E14 AS SHOWN BELOW:




9. INSTALL TURRETS E1-E5, E8-E12, AND E15-E21 AS SHOWN BELOW:



10. INSTALL 4 STANDOFFS AT 4 LOCATIONS AS SHOWN BELOW:



APPROVALS		 1630 MCCARTHY BLVD MILPITAS, CA 95035 PH: (408)432-1900 www.linear.com LTC CONFIDENTIAL- FOR CUSTOMER USE ONLY		
PCB DES.	M. HAWKINS			
APP ENG.	R.SMITH	TITLE: ASSEMBLY DRAWING, TOP		
		10/20 AMP INTEGRATED HOT SWAP CONTROLLER		
		SIZE N/A	IC NO. LTC4233/LTC4234 DEMO CIRCUIT 2116A	REV. 1
SCALE = NONE		FILENAME: DC2116A-1.PCB		SHT 1 OF 1