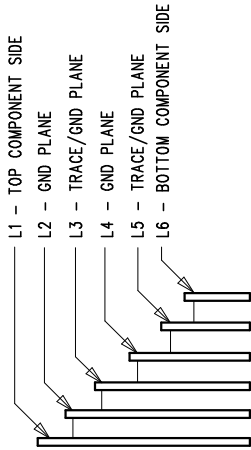


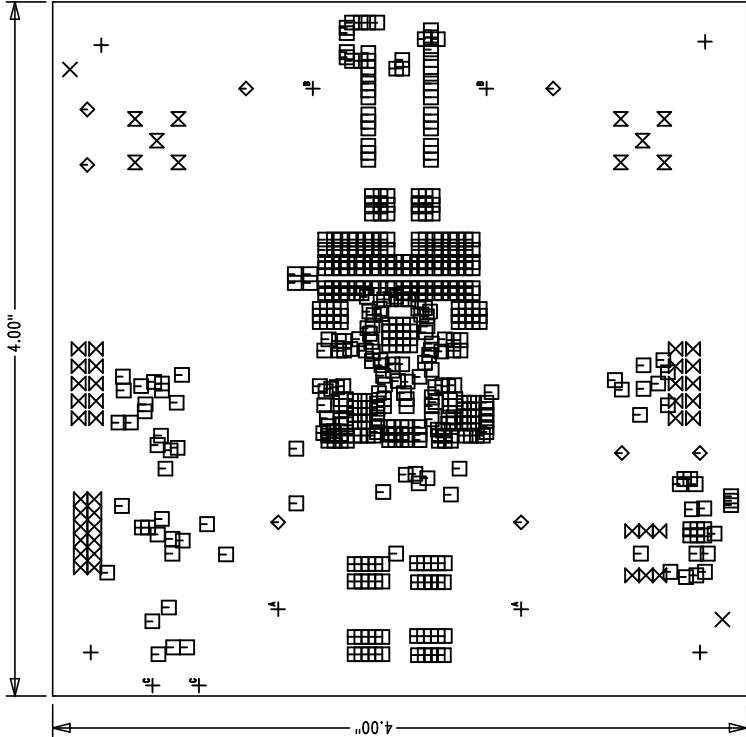
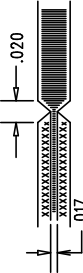
REVISION HISTORY			
ECO REV	DESCRIPTION	APP. ENG.	DATE
-	1	PRODUCTION	Y1 S.
-	1	PRODUCTION	2-13-13

LAYER STRUCTURE



NOTES: UNLESS OTHERWISE SPECIFIED

1. FAB PER IPC-A-600.
2. MATERIAL: -EPOXY FIBERGLASS, NEMA GRADE FR-4
-FINISHED THICKNESS TO BE 0.062" +/- .005"
-TOTAL OF 6 LAYERS WITH 2 OZ. CU ON THE LAYER 1, LAYER 2, LAYER 5 AND LAYER 6.
1 OZ. CU ON THE LAYER 3 AND LAYER 4
-FLAMMABILITY RATING: 94 V-0 MINIMUM.
3. SIZE: CUT TO DIMENSIONS AND TOLERANCES SHOWN.
0.00" ARE PRIMARY DATUMS.
4. DRILLING: -DRILL HOLES PER SCHEDULE. PLATE THROUGH HOLES WITH COPPER, 0.001" THICK MIN.
-ALL HOLE SIZES ARE SPECIFIED AFTER PLATING.
-HOLE LOCATION TOLERANCES ARE +/-0.003" IN RELATION TO CENTER
5. FINISH: -SMOBC USING LPI BOTH SIDES, COLOR GREEN.
-GOLD IMMERSION BOTH SIDES.
(LEAD FREE SOLDER CAN BE USED FOR PROTOTYPE)
-FOR SILKSCREEN: BOTH SIDES USE WHITE NON-CONDUCTIVE INK.
6. DO NOT ALTER ARTWORK e.g. TO ADD LOGO OR DATE CODE.
PAD SIZE CAN BE MODIFIED TO MEET END FINISH.
7. PCBs ARE TO BE RoHS COMPLIANT.
8. SCORING FOR PANELIZED PCB:



SIZE	QTY	SYM	PLATED	TOL
0.187	4	+	YES	+/-0.003
0.07	2	X	NO	+/-0.003
0.01	500	□	YES	+/-0.003
0.067	8	◇	YES	+/-0.003
0.035	38	⊗	YES	+/-0.003
0.055	10	⊗	YES	+/-0.003
0.205	2	⊕	YES	+/-0.003
0.189	2	⊖	YES	+/-0.003
0.038	2	⊖	NO	+/-0.003

UNLESS OTHERWISE SPECIFIED		APPROVALS	
DIMENSIONS ARE IN INCHES		PCB DES.	HZ
TOLERANCES:		APP ENG.	Y1 S.
0.XX" = ±0.01"		TITLE: FABRICATION DRAWING	
0.XXX" = ±0.005"		HIGH DENSITY DC/DC CONVERTER	
INTERPRET DIM AND TOL PER ASME Y14.5M-1994		WITH POWER SYSTEM MANAGEMENT	
THIRD ANGLE PROJECTION		SIZE	IC NO. LTC3880EJ
		REV	1
		FILENAME:	DC2088A-1PCB
		SHT 1 OF 1	

LINEAR TECHNOLOGY

1630 MCCARTHY BLVD
MILPITAS, CA 95035
TEL: 408.261.0000
WWW.LINEAR.COM
LTC CONFIDENTIAL -
FOR CUSTOMER USE ONLY